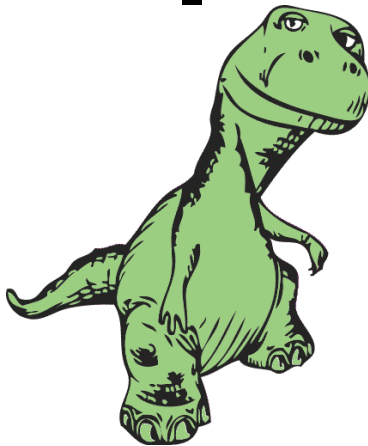
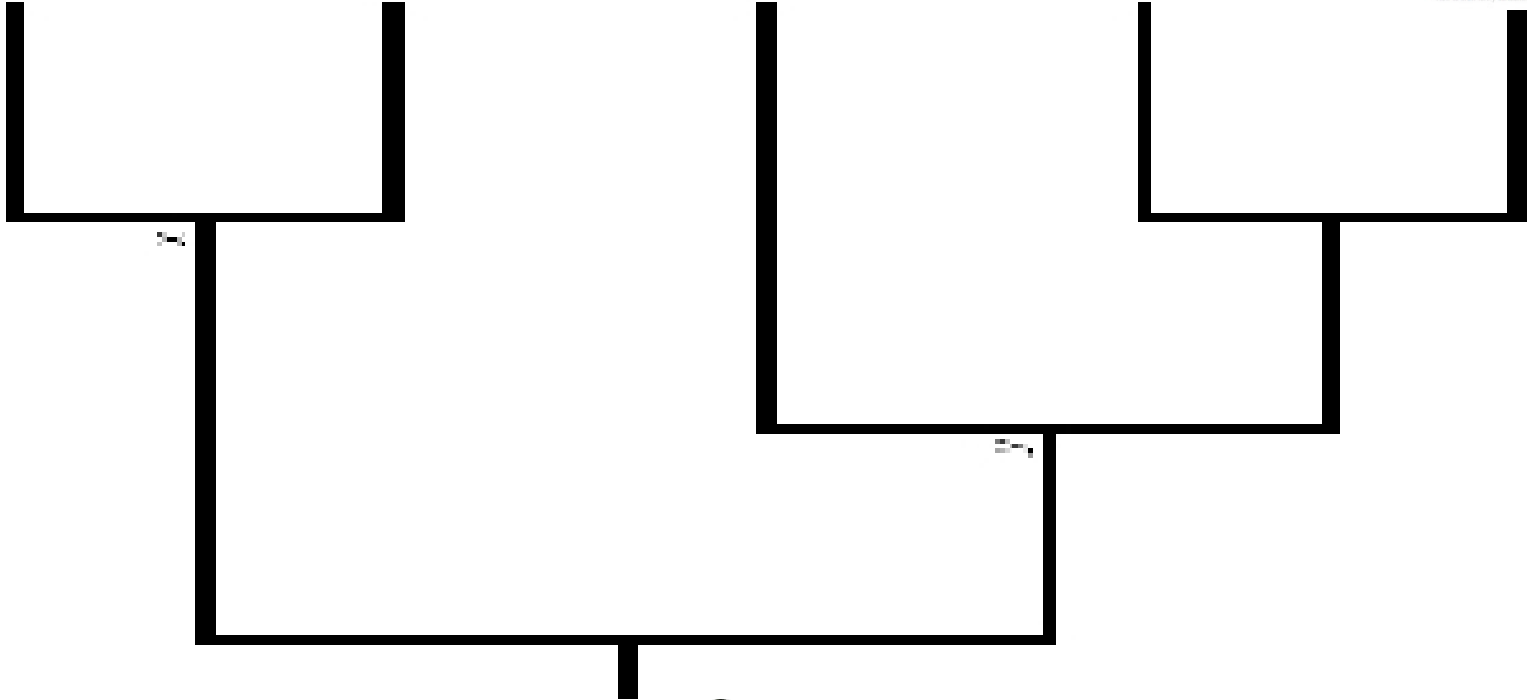
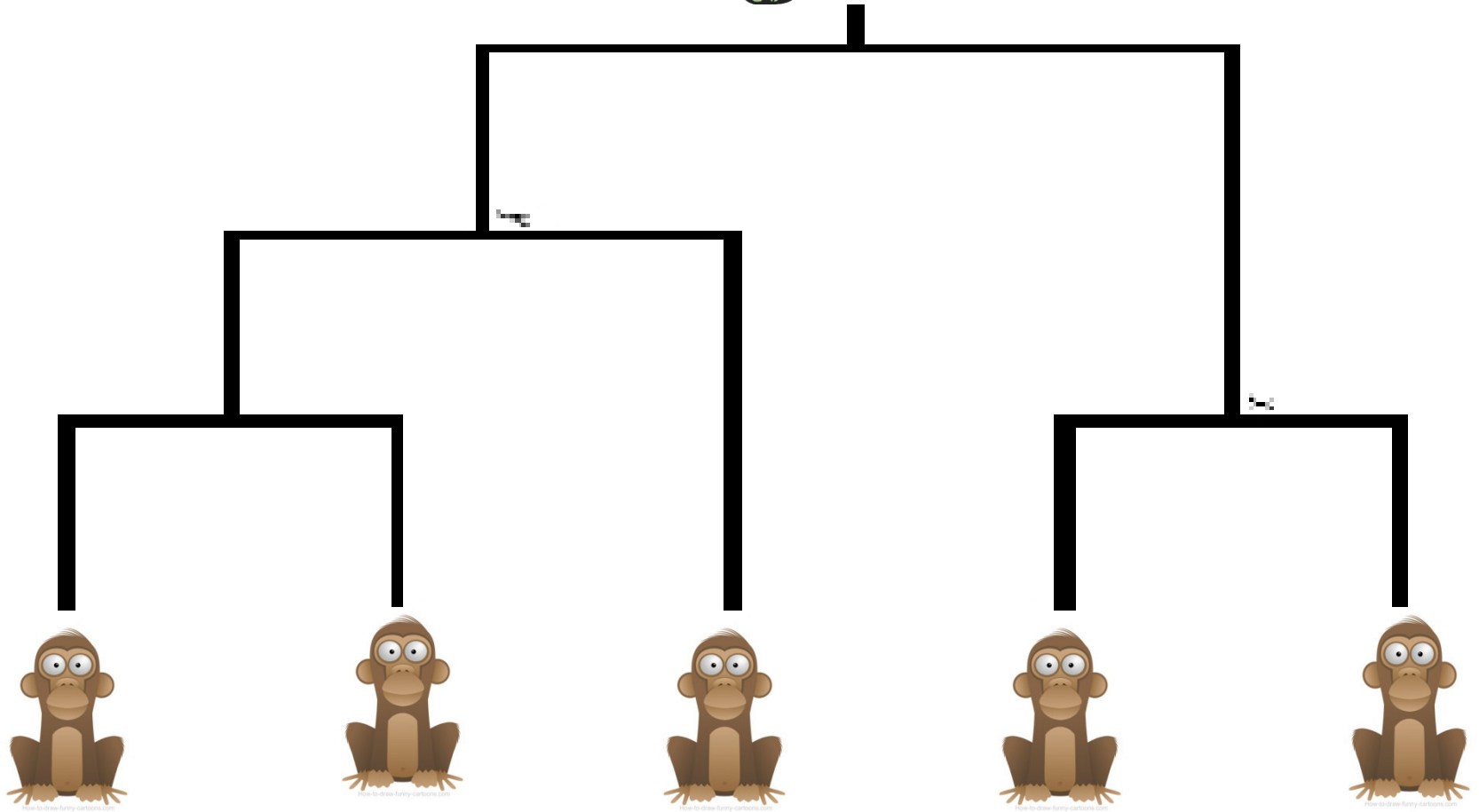
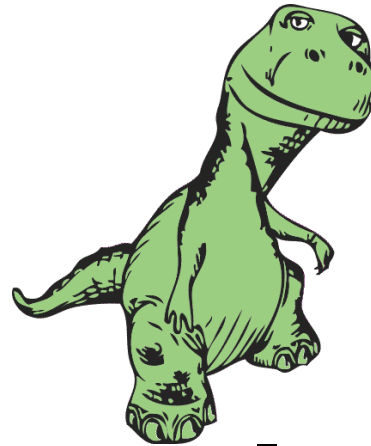


Evolution, Revolution and Creative Leadership

Piers Ibbotson
Directing Creativity



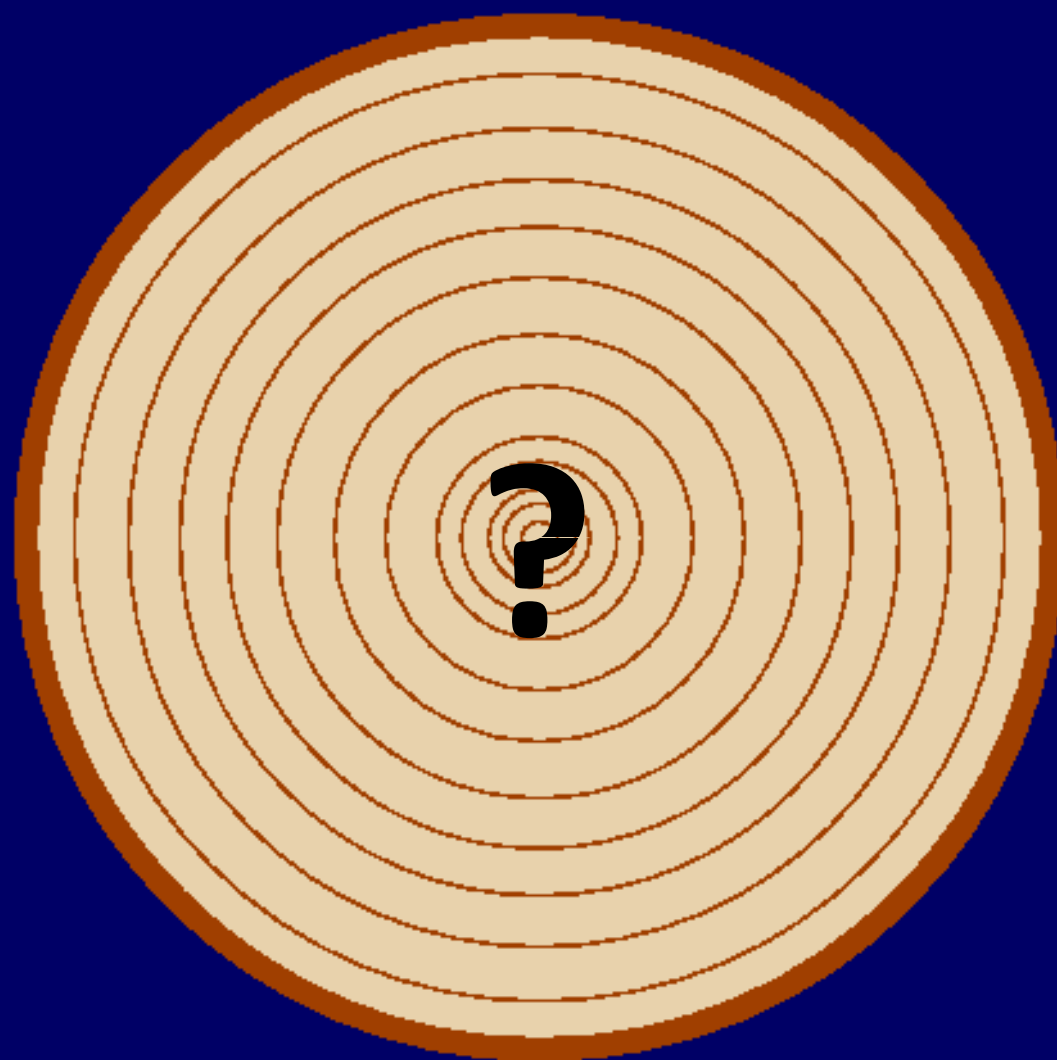


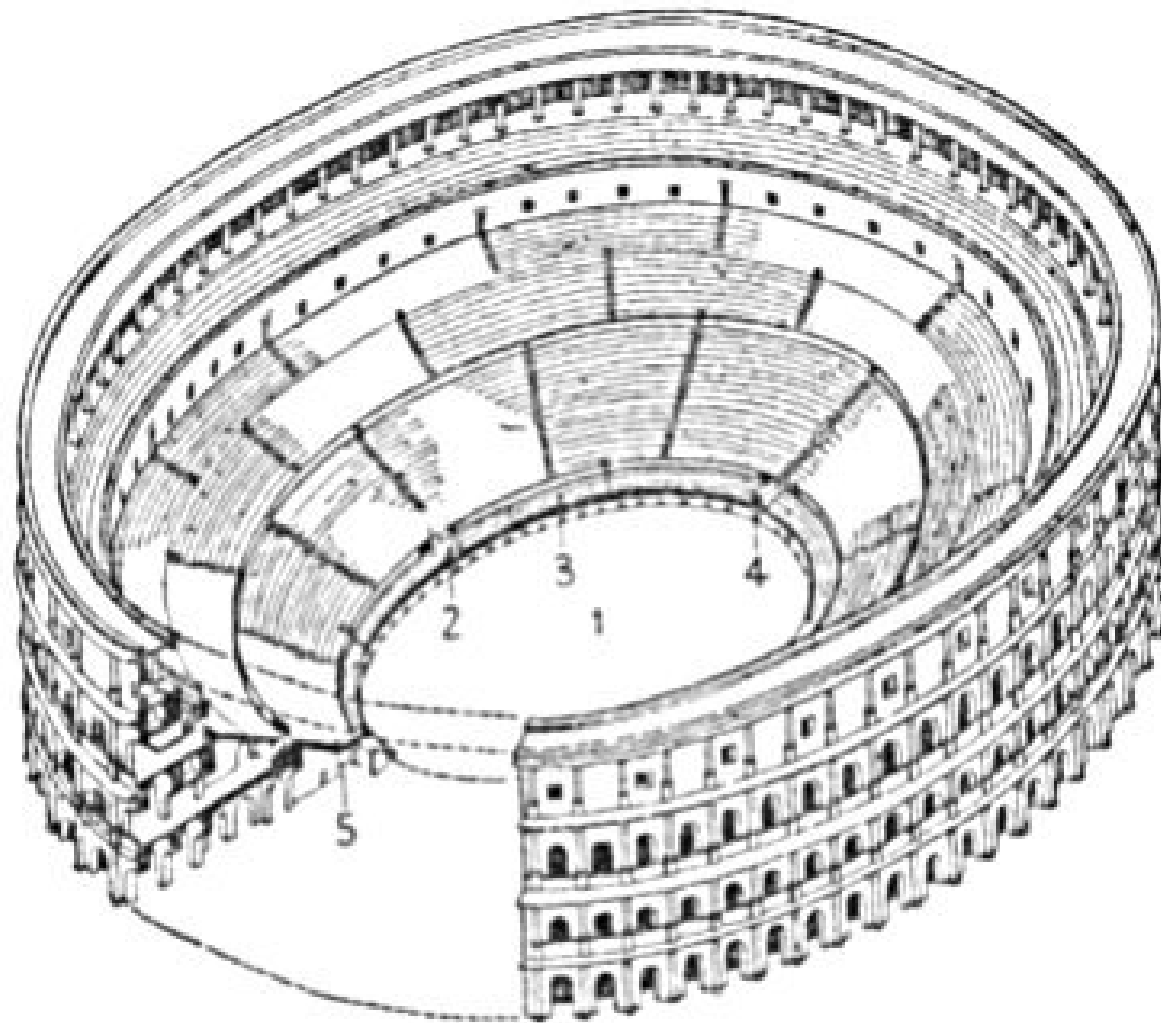
150

24.72+/-1.04

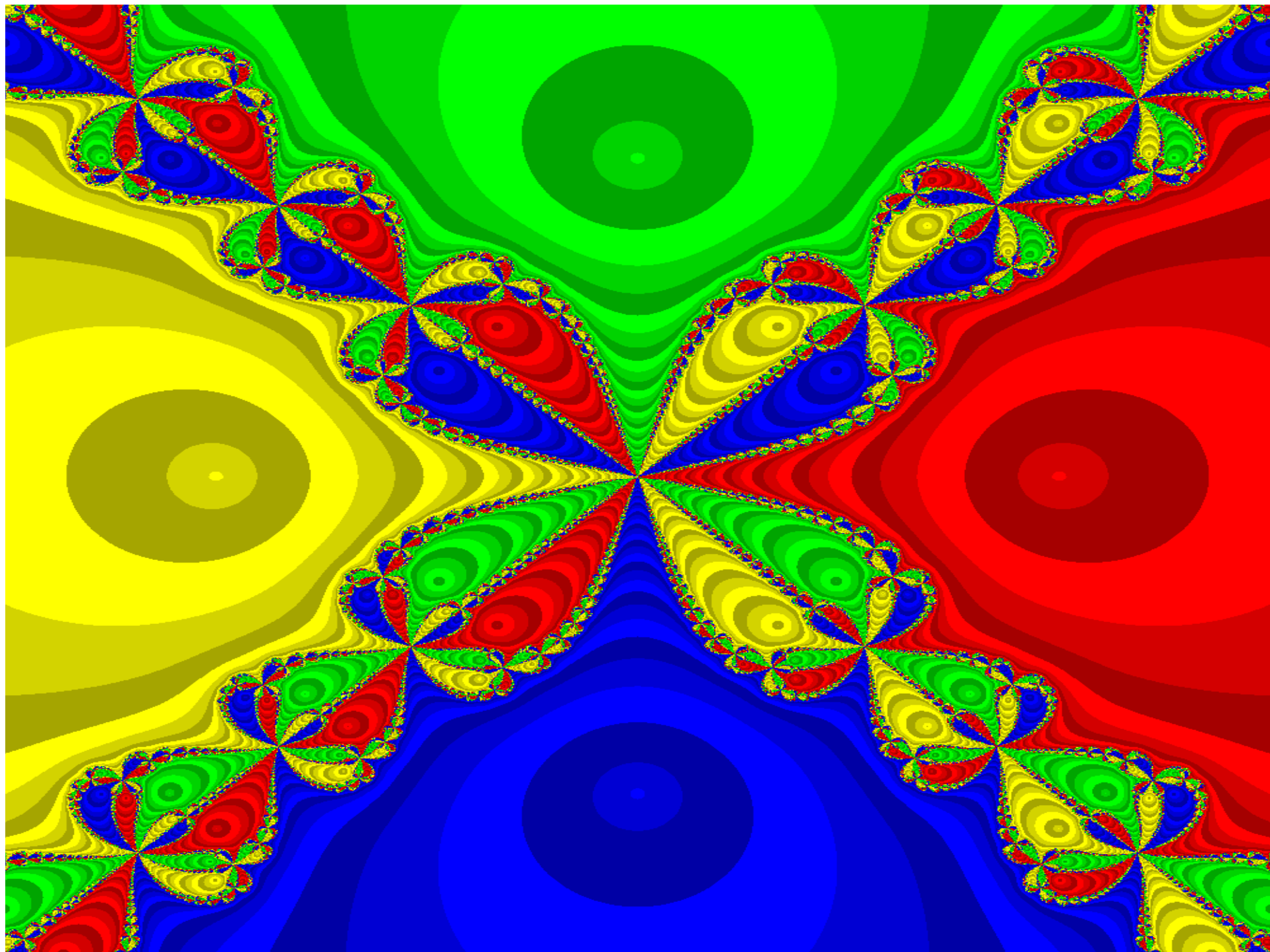
25 max

Who are they?





ROMAN AMPHITHEATRE



WHAT IF.....?

The Artists Paradox

***Creativity needs
Constraints***

- ***Create Trust and Acceptance***
- ***Suspend hierarchy***
- ***Frame Constraints***
- ***Operate with Encouragement***

Ground rules for Creative Leadership

- Suspend judgement (of yourself and others)
- Acknowledge the subjective
- Layer Up
- Hold back from conclusion
- Be Vigilant